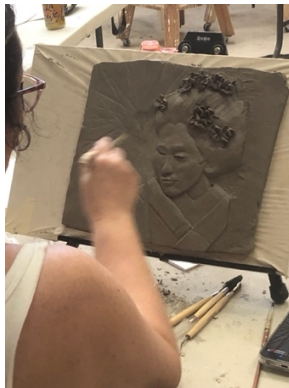
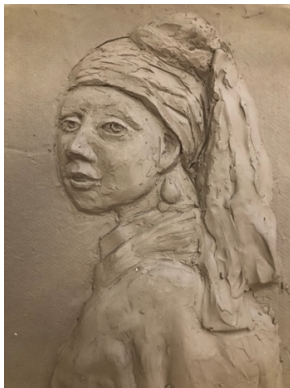




RELIEF SCULPTURE: The Magical Bridge Between 2D and 3D

July 23 & 30 11- 4pm

In this two-day clay workshop students will explore the relationship between 2-D and 3-D by creating a relief sculpture integrating both principles over the duration of the workshop. Drawing, painting, modeling and carving techniques will be explored as well as faux finishing applications upon completion. Students will have the option of creating a faux metal final surface or they may opt for a full chroma painted surface based on their own interests and style. All levels welcome. Full lunch included and all materials & tools supplied. Complex painting options may require participants to bring their own desired paint. \$85



For more info... bluemerlestudios00@gmail.com